



ZONE INDUSTRIALO-PORTUAIRE DE SEPT-ÎLES

Utatusseu-mashinaikanuau anitshenat ka
katshitaikuht umenu atusseunnu

Nanatu-tshissenitakanu neme tutakaniti atusseun tsh
mishitakanit anite tshemateti atusseutshuapa akumunanit Uashat

Ume etishaimatan ka natuenitamuin.
Kauaitshiaushinanut anite ne nipi
tshipa ishi-atushkateu.

Québec 

Tshekuan uiauitakanit

Anite ka tutakanit atusseun tiapitik uinipekut 2015-2030, ua atusseuatshenanut shipek¹ St-Laurent tshetshi mishitakanit eshpish shuniatshenanut mak tshetshi tutakaniti kutaka atusseuna, Uepishtikueiau-tshishe-utshimau mishkamupan kutunnu ashu kutuasht anite uiesh tshipa ishi-uitakanua miam tshetshi tshimatakaniti atusseutshuapa anite akumunanit. Nenu e tutak, Uepishtikueiau-tshishe-utshimau ui uauitshieu shuniat nenua tipan ka uitshiueniti e tshitshipanitakanniti atusseuna, e tshimatakaniti kutaka atusseutshuapa anite akumunanit mak mamitshetuait etapataki ashit atusseuna e uauetinakaniti tshe aitananut anite pitute tshemateti atusseutshuapa akumunanit e ishi-atussenanut minekash tshetshi takuak ne atusseun.



Anite tshemateti atusseutshuapa tiapitiki akumunanit Uashat

Anite tshemateti atusseutshuapa tiapitiki akumunanit Uashat, anite takuan pessish etussenanut akumunanit mak ashit, tekuaki meshkanaua mak ishkuteutapan-meshkanaua. Papessish tekuaki neni, mishta-minupanikuat anitshenat atusseutshuapa, miam anitshenat ka atusseshtahk ka mishkutshipanitakanit tshekuan mak ka uauetinakanit tshe ishi-aitinanut, usham uitshieu nenua atusseutshuapa anite tshemanitishuniti tshetshi eka animiuniti e apashtaniti utatusseuakana mak tshetshi minu-itishaikanniti ka tutahk tshekuana nete mishue tshitassinat eshpitashkamikat tshiuetin mak nete kutaka assia.

E mishitakanit neme tshe tshimatakaniti atusseutshuapa tiapitiki akumunanit Uashat, tshika ishinakutakanu tshetshi minuanit tshe itapashtahk anitshenat atusseutshuapa, tshetshi aiat mishanit eshi-atusseht kie ma tshetshi mamu apashtahk nenua ka tshimateniti ashit eshi-uauitshiaushinanut anite akumunanit. Neme tshemateti atusseutshuapa, ume ishi-takuan anite :

- Nutim ne akumunan anite Uashat
- Anite tshemateti atusseutshuapa pessish tekuaki akumunanit Uashat
- Anite tshemateti atusseutshuapa pessish tekuaki akumunanit mak tiapitiki tshe uauetinakanit tshe ishi-aitinanut anite akumunanit
- Takuan e itishaikaniti tshekuana (nipit, ishkuteutapanit, utapanit) anite tshemateti atusseutshuapa akumunanit

⁽¹⁾ Ne tshemateti atusseutshuapa tiapitiki akumunanit Uashat mamitshetuait ishi-nashatamueu tshishe-utshimaua ka ishi-pimuteniti mak ka aishi-utitaiminiti : e naushunakanit tan tshe itapashtakanit assi, tan tshe ishinakutakanit assi mak kutaka.

Tan tshe ishi-uitshikuht anitshenat atusseutshuapa?

Mashinaikanitshuapa niatshi-apiht anite tshemateti atusseutshuapa tiapitiki akumunanit tshi apashtauat :

- Mamitshetuait e tshi itishaihk eshi-kanuenitashuht (anite e itishaikaniti tshekuaana, ishi-uitakanu miam iapashtakaniti nish^u kie ma anu tshe ishi-itishaikanit tshekuan kie ma itishauakanit auen anite ut atusseutshuapit nuash anite ua itishaikanit/itishuakanit).
- Anite mamu etussenanut menupaniuet tshetshi minu-tapitiki tatipan eshinakuaki atusseutshuapa.

Tshekuan ma nanatu-tshissenitakanit tshekuan ne ut atusseun?

Ne nianatu-tshissenitakanit, tshinatuenitamakunau tshetshi uitamek^u tan tshipa itatussenanu, tshipa aitananu mak tshekuan tshipa tutakanu tshetshi minu-nitautshik ne ka tshimateti atusseutshuapa tiapitiki akumunanit Uashat, mak tshetshi minekash takuak ashit tshetshi minu-uitapimituht anitshenat innuat mak atusseutshuapa. Tshika mishkenau ute tshe pasetshinamek^u mashinaikanuiana kassinu tekuak tshetshi tshissenitakanit mak ka uitakanit tshipa ishpishau ne tshemateti atusseutshuapa akumunanit Uashat.

Ne uet nanatu-tshissenitakanit, tshetshi tutakanit tshe ishi-atussenanut tshe mishitakanit e uitshi-atussemakaniht anitshenat etaht anite mesheku, tshe takuaki menuati tshe tutakaniti, e tshi tshitshipanitakaniti atusseuna mak menuat eshi-kanuenitakanit tshetshi aiat naushunakanit ne ka tshimateti atautshuapa tiapitiki akumunanit Uashat anite ka atautshenanut tshekuan eshpitashkamikat assit ashit e nashakannit eshinniuhit anitshenat innuat etaht anite tekuannit nenu. Tshetshi utitakanit ne, *uemut* nui tshissenitenan etenitamek^u!

Ume eshpishat ne ua tutakanit anite tshe tshimateti atusseutshuapa tiapitiki akumunanit Uashat



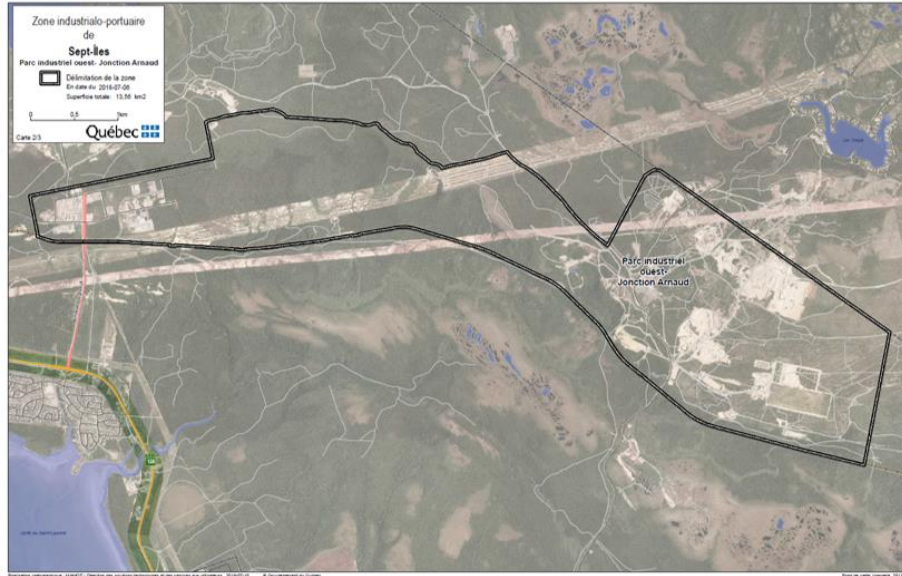
Zone 1 : Pointe-Noire

- Ishpishau anite tshiuuetinit nuash Poste Arnaud mak mishta-meshkanau 138, nete akua-nutinit mishta-shipekut St-Laurent, nete mamit ka-uashaua mak natimit neme utenau Clarke-City
- Pimishimu anite kie ishkuteutapan-meshkanau Arnaud mak pakupeutshikana tekuaki temit
- Takuan anite Uashau-akumunan, ishkuteutapan mak akumunan tiapitiki atusseutshuapit Pointe-Noire mak ashinkan-atusseutshuap Alouette
- Takuan anite ashit meshat assi tshetshi apashtaht ka mishati atusseutshuapa



Zone 2 : assi tekuak tshetshi tshimateti atusseutshuapa natimit – tekuatueshimut meshkanau Arnaud

- Ishpishau tshuetinit nuash shakaikana Rapide mak Daigle, akua-nutinit ishkteutapan-meshkanau Arnaud, tashtuit utenau tepenitak assinu tshemateniti atusseutshuapa eshinikatenit Vigneault anite natimit mak ishkteutapan-meshkanau QNS&L (tekuatueshimut meshkanau Arnaud) anite mamit, mak akua-nutinit, shakaikan Rapide.
- E atshitakanit utenau tepenitak assinu tshemateniti atusseutshuapa, takuana ashit nekau-assia ka mamishati mak nenu assinu ka apashtat utenau tshetshi uepinashut
- Takuana anite ashit mitshet assia tshé itapashtakaniti tshetshi tshimatakaniti atusseutshuapa ka apishashiti mak pashe eshpishati



Zone 3 : mamit (IOC)

- Anite takuan pashtautinit mamit itetshe tetau-utenat Uashat mak kassinu ishi-tapitin utenat etapashtakanit Takuana anite assia mak atusseutshuapa tiapitiki akumunanit tepenitak kanutashinenanut-atusseutshuap IOC, ishkteutapan-meshkanau QNS&L, ashit neni eshi-tshimateti akumunanit anite Uashat.



TSHE ISHI-MISHITAKANIT

Neme tshe mishitakanit anite tshe tshimatakaniti atusseutshuapa tiapitiki akumunanit Uashat, tshika minu-aieshkushtakanu, tshika tutakanu ushkat **tan tshe ishi-mishitakanit**. Ne atusseun ua tutakanit, ui ishinakutakanu tshetshi minunakutakanit anite tshe tshimateti atusseutshuapa tiapitiki akumunanit Uashat mak tshetshi tutakanit tshetshi aiat mitshetiki atusseutshuapa mak tshe ishi-aieshkushtakanit tshe aitananut tekuaki uashka anite tshemateti tshekuana tiapitiki akumunanit Uashat.

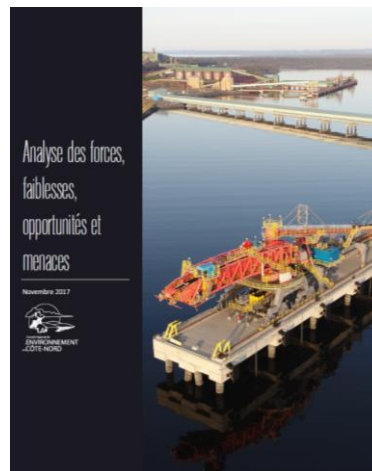
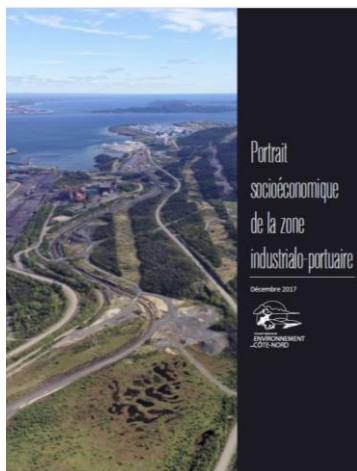
Anite atusseunit tshe ishinakutakanit, tshika uitakanu eshkuati neni assia, eshi-minuat, eshi-kushtikuak mak tshekuana tshipa tshi uitshiku auen e tshitshipanitat atusseunnu anite tshe tshemateti atusseutshuapa tiapitiki akumunanit Uashat, mak tshika mashinataim^u mitshet tshekuana tshipa tshi tutakanu mak tshipa aitananu, tan ishpish tshipa ui tshishtakanu, mak kutaka.

TAN ETENITAKUAK INNIT MAK E SHUNIATSHENANUT ANITE KA TSHIMATETI ATUSSEUTSHUAPA TIAPITIKI AKUMUNANIT UASHAT

Passe umeni uiauitakaniti ute mashinaikanit ka tutahk Mamuitun ka atusseshtak eshi-takuannit assit anite Naneu-Tshiuwetinit neme uinashku-pishim^u 2018, takuana anite utatusseu-katshitapatakanimit Ka tshimateti atusseutshuapa tiapitiki akumunanit Uashat.

ESHI-MINUAT, EKA ESHPISH MINUAT, TSHEKUANA TSHIPA TSHI UITSHIKU AUEN E TSHITSHIPANITAT ATUSSEUNNU MAK ESHI-KUSHTIKUAK TSHETSHI ISHPANIT

Ume mashinaikanit ka tutahk Mamuitun ka atusseshtak eshi-takuannit assit anite Naneu-Tshiuwetinit neme pishimuss 2017, takuan anite utatusseu-katshitapatakanimit Ka tshimateti atusseutshuapa tiapitiki akumunanit Uashat.



Kukuetshitshemuna

Ume tshe kukuetshimikauiek^u, tshetshi patshitinamek^u tshitaimunuau, tshekuan miamitunenitamikuiek^u mak tan eshi-uapatamek^u neme ua mishitakanit ka tshimateti atusseutshuapa tiapitiki akumunanit Uashat. Tshekuan ua utitaimat? Tshetshi mishkakanit mamu tshekuan nikan tshe ashtakanit.

Tshinuau etenitamek^u, tan tshipa ishinakutakanu ne ka tshimateti atusseutshuapa tiapitiki akumunanit Uashat? Tshetu-atusseuna tshe tutakaniti anu tshipa minuau nikan tshetshi ashtakaniti? Tan tshipa tshi ishi-uitshiuueu tshetshi tutakanit tshekuan e ishpitenitakanit ne shaputue e kanuenitakanit eshi-kanuenitashunanut mak mamu e tananut?

Uiesh kutunnu ashu patetat e tshakashtet tshika tanau e shakassinataiek^u umeni kukuetshitshemuna, mak apu nita tshika ut uaitakanit ume kassinu eshi-mashinataimek^u.

Nikan tshinashkumitinan tshe ishpish uaitshiat!

Kukuetshitshemun 1

Kassinu tshekuan e tshitapakanit, tan eshpish ishi-minuenitamikuiek^u neme uiauitakanit eshpish mishitakanit tshekuan tekuak Uashat umeni kutunnuepipuna utat ut?

a. Nimishta-minuenitamikun b. Niminuenitamikun c. Apu mishta-minuenitamikuian d. Nasht apu minuenitamikuian

Uitamuk^u etenitamek^u :

Kukuetshitshemun 2

Tshinuau etenitamek^u, ishpish a mishitakanu ne ka tshimateti atusseutshuapa tiapitiki akumunanit Uashat ?

Eshe _____

Mauat _____

Apu takuak etenitaman _____

Kukuetshitshemun 3

Tshipa issishuenau a ne eshpish pitutepanit shuniau anite ut etusseshtakanit mekuat atusseutshuapa tiapitiki akumunanit Uashat :

- a. Mishta-mishau
- b. Mishau
- c. Apu ishpish mishat
- d. Apu matenitakuak

Uitamuk^u etenitamek^u :

Kukuetshitshemun 4

Tshinuau etenitamek^u, tshekuana neni e nishiki anu menuati tshekuana anite ka tshimateti atusseutshuapa tiapitiki akumunanit Uashat ?

(Menuat tshekuan : menuat anite pitute etusseshtakanit ka tshimateti atusseutshuapa tiapitiki akumunanit tshipa tshi ut tshimatakanu tshekuan aishkat).

Kukuetshitshemun 5

Tshinuau etenitamek^u, tshekuana neni e nishiki eka eshpish minuati tshekuana anite ka tshimateti atusseutshuapa tiapitiki akumunanit Uashat ?

(Eka eshpish minuati : eka uatshiuat anite pitute etusseshtakanit ka tshimateti atusseutshuapa tiapitiki akumunanit tshipa takuan tshetshi mishta-uauetinakanit).

Kukuetshitshemun 6

Tshinuau etenitamek^u, tshekuana neni e nishiki tshekuana tshipa tshi uitshiku auen e tshitshipanitat atusseunnu anite tshemateti atusseutshuapa tiapitiki akumunanit Uashat?

(Tshekuan uatshiuat tshetshi tshitshipanitakanit tshekuan : upime uetshipanit tshekuan menuat tshipa tshi uitshiuueu anite tshemateti atusseutshuapa tiapitiki akumunanit)

Kukuetshitshemun 7

Tshinuau etenitamek^u, tshekuana neni e nishiki tshekuana kueshtikuaki tshetshi ishpaniti anite tshemateti atusseutshuapa tiapitiki akumunanit Uashat?

(Tshekuan kueshtikuak tshetshi ishpanit : upime uetshipanit tshekuan tshé nakaik kie ma tutak tshetshi eka ishpish mishitakanit anite tshemateti atusseutshuapa tiapitiki akumunanit)

Kukuetshitshemun 8

Tshekuan ne anu uet mamitunenitamikuiek^u ne uiauitakanit tshetshi mishatakanit tshekuan anite Uashat?

Kukuetshitshemun 9

Umeni ka mashinateuani, naushunamuk^u neni etenitamek^u tshipa uitshiuuea anite utenat mak tshetshi nishuapatakanit eshpitashkamikat assit ne ka tshemateti atusseutshuapa tiapitiki akumunanit.

(Anu peik^u tshipa tshi naushunenau)

- E utinakanit eshi-takuak assit
- Anite e uauetinakanit e itishaikanit tshekuan (miam mate : ishkuteutapan-meshkanat, utit, upashtamakanit ut, meshkanat)
- Nishuau kie ma nishuau e uaueshtakanit tshekuan eshi-takuak assit
- Atusseutshuapa ka tutakaniti tshekuana
- Atusseutshuap ka nanatuapatitshenanut kie ma ka ussi-mishkakanit tshekuan
- Atusseutshuapa ka atusseshtuht maniteua ka papamishkaniti
- Ka mitshinanut (e kussenanut, patshitinaun, ka nitautshiakaniht nameshat, mak kutaka.)
- Ussi-shutshishiun iapashtakanit tshetshi pimipanitakanit tshekuan
- Kutaka (uitamuk^u tshekuan) : _____

Kukuetshitshemun 10

Tshek ma ussi-atusseutshuap natshi-tshimanitishuti *anite tshemateti atusseutshuapa tiapitiki akumunanit Uashat, tshekuan tshipa minuenitenau tshetshi uauitamakaiek^u eshk^u eka tshimatakanit tshekuan?*

- Tshe ishpish atusseuiakaniht auenitshenat ka apiht ute
- Tshipa ishi-takuan atusseun ute (e manutshenanut, e atusseuatshenanut, e utinakanit etapashtakanit)
- Eshi-atusseshtakanit/eshi-katshitauet anite eshi-takuak assit
- Eshi-uapatakanit mamu e tananut ashit ka apiht ute mak neni atusseutshuapa tshemateti pessish, tshek ishinakuaki
- Kutak (uitamuk^u tshekuan) : _____

Kukuetshitshemun 11

Tshetshi minushtet ne ka tshemateti atusseutshuapa tiapitiki akumunanit Uashat, tshinuau etenitamek^u, tshekuan tshipa tutakanu kie ma tshimatakanu tshetshi uitshiuenanut e mishitakanit anite tshemateti atusseutshuapa tiapitiki akumunanit Uashat?

Kukuetshitshemun 12

Takuan a tshekuan tshipa uitenau tshetshi tutakanit kie ma aitinanut tshetshi minu-uitapimitunanut ?

Kukuetshitshemun 13

Umeni pipuna utat, tshituteti a tshekuan menuatamin anite assit ka tshemateti atusseutshuapa tiapitiki akumunanit Uashat? Miam mate :

- Usht e kussenanut
- E pamutenanut (e pimutenanut, e pimautihunanut, e papami-tshikashamenanut, e shushkupatiunanut kie ma kutak e aiatshinanut)
- E nataunanut/e unaitshenanut
- E maushunanut
- E tshitapamakaniht pineshishat
- E tshitapakanit eishinakuak assi
- Pipunitapan, kaneukatet
- Kutak (uitamuk^u tshekuan) : _____

Kukuetshitshemun 14

Takuan a kutak tshekuan ua uitamek^u kie ma aimun ua patshitinamek^u anite ua mishitakanit ne ka tshimateti atusseutshuapa tiapitiki akumunanit Uashat ?

Kukuetshitshemun 15

Tan tshipa minuenitenau tshetshi katshitinamek tipatshimuna anite uiauitakanit tshe mishitakanit anite ka tshimateti atusseutshuapa tiapitiki akumunanit Uashat? Anu peik^u tshipa tshi naushunenau.

- Utenau utaimun-mashinaikan
- Tipatshimun-mashinaikan ka tutakanit ute utenat
- Ka tshimateti atusseutshuapa tiapitiki akumunanit Uashat utatusseu-katshitapakanit-mashinaikan
- Facebook

Kutak (^u tshekuan) : _____

Tshika apashtakanua umeni kukuetshitshemuna tshetshi mamuanakaniht anitshenat tshe tshiuenahk e tshitapatakannit uetshipaniht, etatupipuneshiht, mak kutaka.

Tanite tshipetetau e uaitakanit ume ka nanatu-tshissenitakanit ?

- Tipatshimun-mashinaikan ka tutakanit ute utenat
- Facebook
- Kanatutakanit/aimu-mishtikut
- Ka uitakanit tshekuan mashinaikanit/ka uaitakanit tshekuan
- Utatusseu-katshitapatakanimit ne *Ka tshimateti atusseutshuapa tiapitiki akumunanit Uashat*
- Anite ka patshitinak aimunnu *Ka tshimateti atusseutshuapa tiapitiki akumunanit Uashat(B@C Mobile)*
- Peikuaik tshekuan ka nanatu-tshissenitakanit
- Auen etat pessish etaian

Kutak (u tshekuan) : _____

Tan eshi-uapamitishuiek“?

- Ishkueu
- Napeu
- Kutak tshitishi-uapamitishunau

Dans quel groupe d’âge vous situez-vous ? Tan etatupipuneshiek“?

- 16 nuash 24 tatupipuna
- 25 nuash 34 tatupipuna
- 35 nuash 44 tatupipuna
- 45 nuash 54 tatupipuna
- 55 nuash 64 tatupipuna
- 65 nuash 74 tatupipuna
- 75 kie ma etatu tshitatupipuneshinau

Tan etashiek“ tshitshuat (tshinuau ashit atshimitishuk“)

- 1
- 2
- 3
- 4
- 5
- 6 kie ma etatu tshimitshetinau

Tan eshi-atusseiek^u?

Tanite itetshe epiek^u ute Uashat kie ma pessish anite e takuak utenau?

- Centre-ville / Marie-Immaculée
- Mgr Blanche / Vieux Quai
- Haut Ste-Famille
- Place de l'Anse / Parc Ferland
- Clarke-City / Val Marguerite
- Les Plages / Matamec / Moisie
- Uashat Mak Mani-Utenam
- Lac Labrie
- Kutak utenau (uitamuk^u) _____

Tan etashtet anite epiek^u?

Apu tshika ut apashtakanit tshikukuetshitshemun-mashinaikanuau eka nutim tshishtaiekui. Itashaimunan tshimashinaikanuau eshk^u eka 31 e tshishtauakanit octobre 2018:

- [Atusseau katshitapatakanit ui apashtaiekui :arlene@boiteacles.ca](mailto:arlene@boiteacles.ca)
- Ui itashaimuiati kie ma ui natshi-patshitinamekui anite Boites à Clés : 350, rue Smith, bureau 112, Sept-Iles, QC, G4R 3X2

Etatu ui tshissenitamekui shatshuapatamuk^u ka tshimateti atusseutshuapa tiapitiki akumunanit Uashat utatusseau-katshitapatakanit-mashinaikan : www.zoneIPseptiles.com

Tshimishta-nashkumitan ka ishpish mishta-uauitshiat!